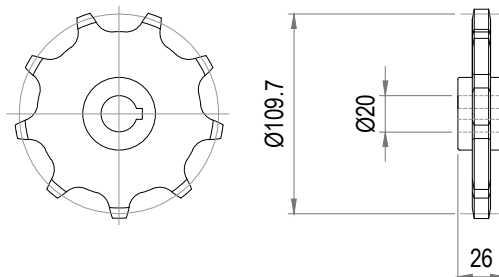


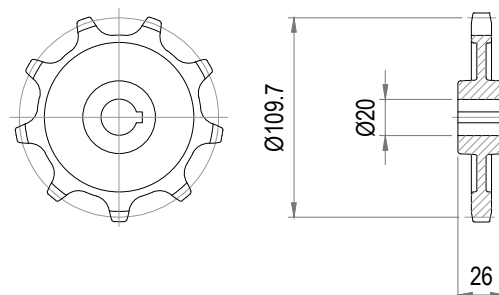
## 900-1000

KEDJEHJUL STÅL FÖR SERIE 830, 140 OCH 220  
 DRIVE SPROCKET STEEL FOR SERIE 830, 140 AND 220  
 KETTENRAD STAHL FÜR SERIE 830, 140 UND 220



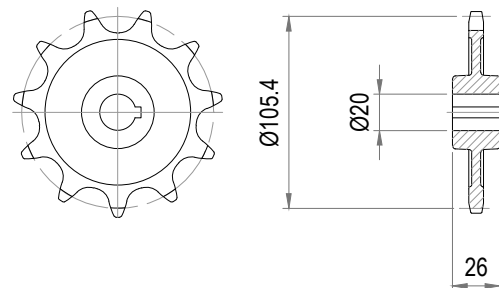
## 900-1010

KEDJEHJUL FÖR SERIE 830, 140 OCH 220  
 DRIVE SPROCKET FOR SERIE 830, 140 AND 220  
 KETTENRAD FÜR SERIE 830, 140 UND 220



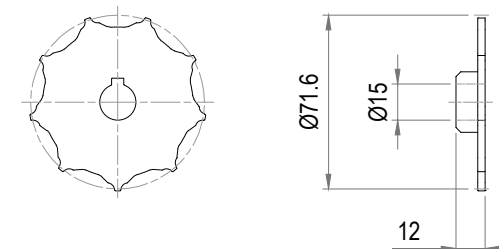
## 900-1020

KEDJEHJUL FÖR SERIE 620  
 DRIVE SPROCKET FOR SERIE 620  
 KETTENRAD FÜR SERIE 620



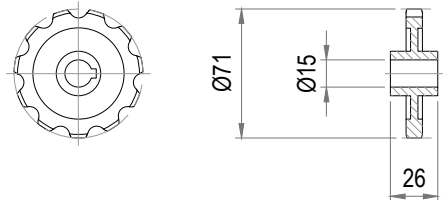
## 900-1025

KEDJEHJUL FÖR SERIE 380  
 DRIVE SPROCKET FOR SERIE 380  
 KETTENRAD FÜR SERIE 380



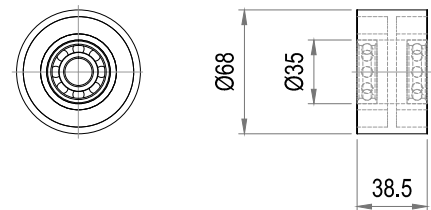
## 900-1026

KEDJEHJUL FÖR KEDJA 620-2200  
DRIVE SPROCKET FOR CHAIN 620-2200  
KETTENRAD FÜR KETTE 620-2200



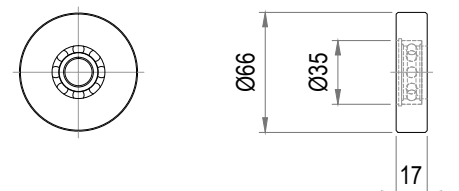
## 900-1030

BRYTRULLE MED KULLAGER 6202 FÖR SERIE 620  
IDLER WHEEL WITH BALL BEARING 6202 FOR SERIE 620  
UMLENKROLLE MIT KUGELLAGER 6202 FÜR SERIE 620



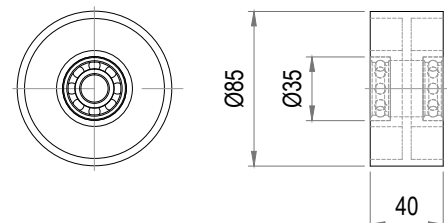
## 900-1032

BRYTRULLE MED KULLAGER 6202 FÖR KEDJA 620-2200  
IDLER WHEEL WITH BALL BEARING 6202 FOR CHAIN 620-2200  
UMLENKROLLE MIT KUGELLAGER 6202 FÜR KETTE 620-2200



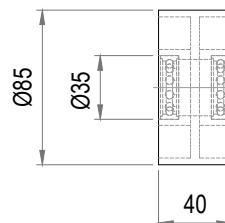
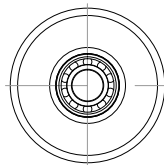
## 900-1035

BRYTRULLE MED KULLAGER 6202 FÖR SERIE 830 OCH 140  
IDLER WHEEL WITH BALL BEARING 6202 FOR SERIE 830 AND 140  
UMLENKROLLE MIT KUGELLAGER 6202 FÜR SERIE 830 AND 140



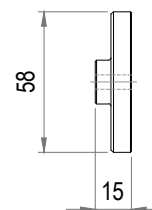
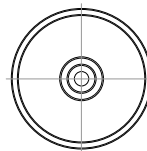
## 900-1037

BRYTRULLE MED KULLAGER 6003 FÖR SERIE 220  
IDLER WHEEL WITH BALL BEARING 6003 FOR SERIE 220  
UMLENKROLLE MIT KUGELLAGER 6003 FÜR SERIE 220



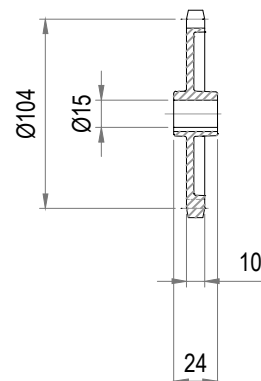
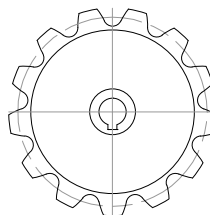
## 900-1038

BRYTRULLE FÖR SERIE 380  
IDLER WHEEL FOR SERIE 380  
UMLENKROLLE FÜR SERIE 380



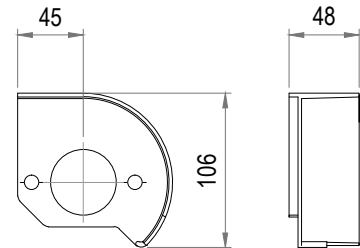
## 900-1040

KEDJEJUL FÖR SERIE 240  
DRIVE SPROCKET FOR SERIE 240  
KETTENRAD FÜR SERIE 240



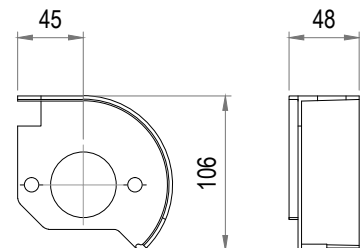
## 900-2100V/H

KEDJESKYDD DRIVSTATION SERIE 140 OCH 220  
CHAIN GUIDE DRIVE UNIT SERIE 140 AND 220  
ABDECKUNG ANTRIEBSSTATION SERIE 140 UND 220



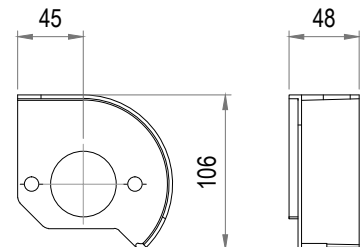
## 900-2110V/H

KEDJESKYDD VÄNDENHET SERIE 140  
CHAIN GUIDE IDLER UNIT SERIE 140  
ABDECKUNG UMLLENKEINHEIT SERIE 140



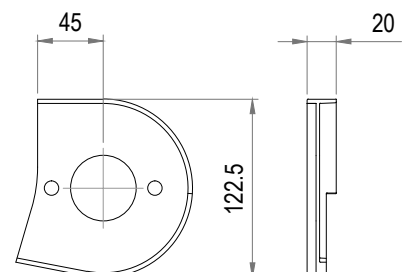
## 900-2115V/H

KEDJESKYDD VÄNDENHET SERIE 220  
CHAIN GUIDE IDLER UNIT SERIE 220  
ABDECKUNG UMLLENKEINHEIT SERIE 220



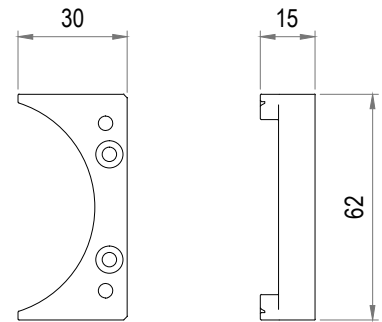
## 900-2120V/H

KEDJESKYDD DRIVSTATION SERIE 620 OCH 830  
CHAIN GUIDE DRIVE UNIT SERIE 620 AND 830  
ABDECKUNG ANTRIEBSSTATION SERIE 620 UND 830



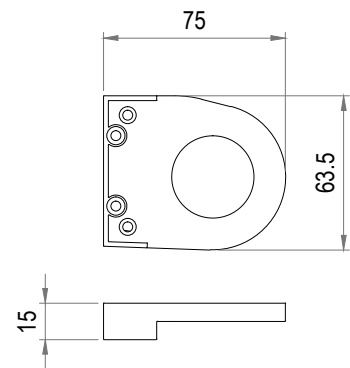
**900-2125**

KEDJESTYRNING FÖR VÄNDENHET SERIE 380  
CHAIN GUIDE FOR IDLER UNIT SERIE 380  
KETTENFÜHRUNG FÜR ANTRIEBSSTATION SERIE 380



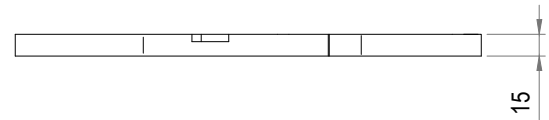
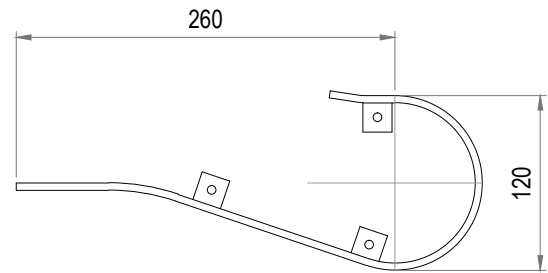
**900-2127V/H**

KEDJESTYRNING FÖR DRIVENHET SERIE 380  
CHAIN GUIDE FOR DRIVE UNIT SERIE 380  
KETTENFÜHRUNG FÜR UMLENKEINHEIT SERIE 380



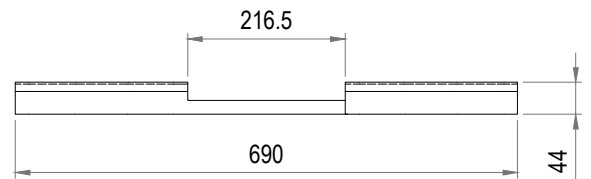
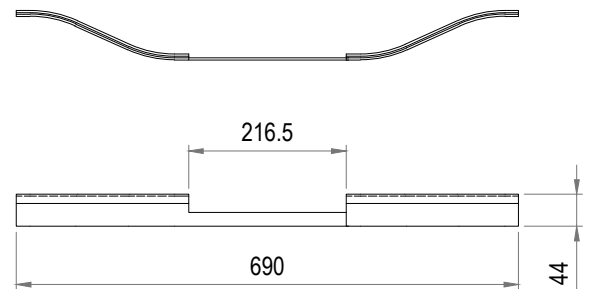
## 900-2130V/H

KEDJESTYRNING FÖR 830-320V/H  
CHAIN GUIDE FOR 830-320V/H  
KETTENFÜHRUNG FÜR 830-320V/H



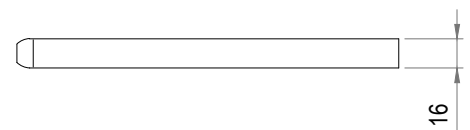
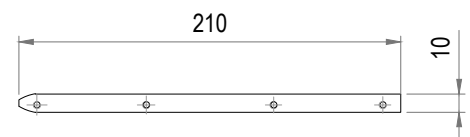
## 900-2135

GLIDLIST FÖR MITTDRIV SERIE 140  
SLIDE RAIL FOR INTERMEDIATE DRIVE SERIE 140  
GLEITSTREIFEN FÜR MITTELANTRIEB SERIE 140



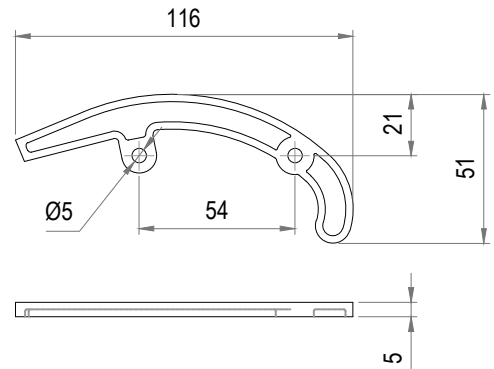
## 900-2136

GLIDSKENA FÖR MITTDRIV  
SLIDE BAR FOR INTERMEDIATE DRIVE  
GLEITSCHIENE FÜR MITTELANTRIEB



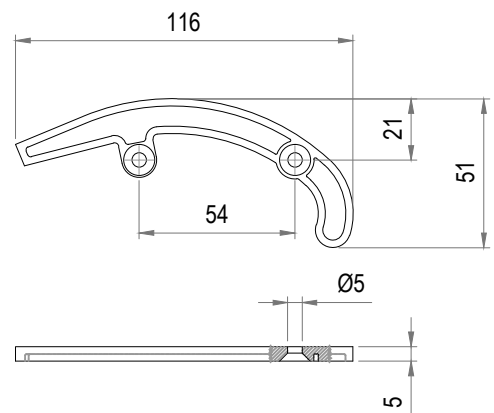
## 900-2140

INSTYRNING FÖR KEDJA DRIVSTATION  
RETURN GUIDE FOR CHAIN DRIVE UNIT  
FÜHRUNG FÜR KETTE ANTRIEBSSTATION



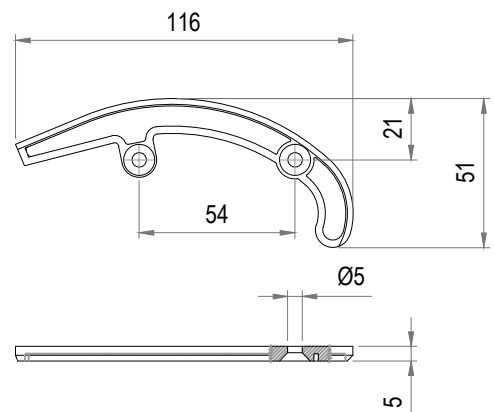
## 900-2150V/H

INSTYRNING FÖR KEDJA MED MEDBRINGARE DRIVSTATION  
RETURN GUIDE FOR CHAIN WITH CARRIER DRIVE UNIT  
FÜHRUNG FÜR KETTE MIT MITNEHMERN ANTRIEBSSTATION



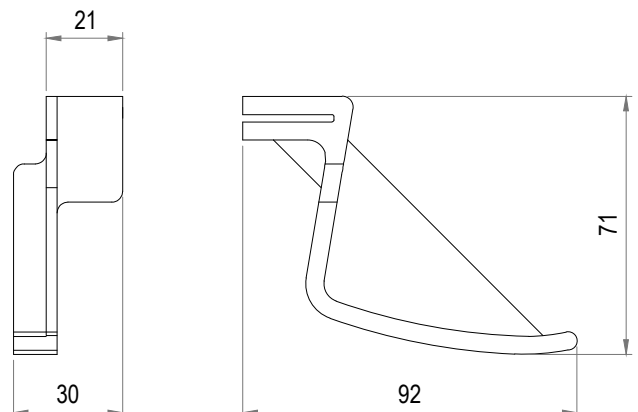
## 900-2160V/H

INSTYRNING FÖR FRIKTIONSKEDJA DRIVSTATION  
RETURN GUIDE FOR FRICTION CHAIN DRIVE UNIT  
FÜHRUNG FÜR FRIKTIONSKETTE ANTRIEBSSTATION



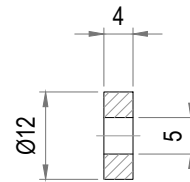
## 900-2165

KEDJESTYRNING TILL DRIVSTATION  
CHAIN GUIDE FOR DRIVE UNIT  
KETTENSFÜHRUNG FÜR ANTRIEBSSTATION



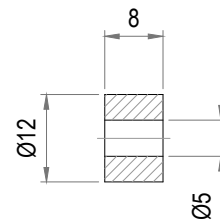
### 900-2170

DISTANSHYLSA 4 MM FÖR KEDJEINSTYRNING  
SPACING SLEEVE 4 MM FOR RETURN GUIDE  
Distanzhülse 4 mm für Kettenführung



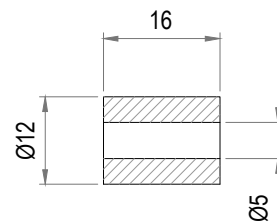
### 900-2180

DISTANSHYLSA 8 MM FÖR KEDJEINSTYRNING  
SPACING SLEEVE 8 MM FOR RETURN GUIDE  
Distanzhülse 8 mm für Kettenführung



### 900-2190

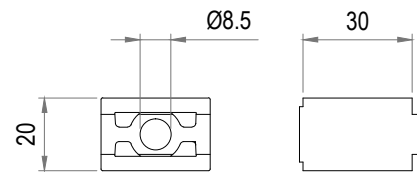
DISTANSHYLSA 16 MM FÖR KEDJEINSTYRNING  
SPACING SLEEVE 16 MM FOR RETURN GUIDE  
Distanzhülse 16 mm für Kettenführung





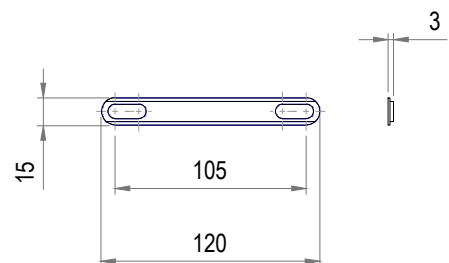
## 900-2200

DISTANS DRIV/VÄNDENHET FÖR SERIE 140  
SPACER DRIVE/IDLER UNIT FOR SERIE 140  
Distanz Antriebsstation/Umlenkeinheit für Serie 140



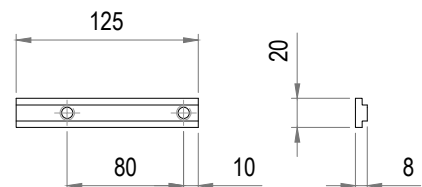
## 900-2210

STYRLINJAL DRIVENHET FÖR SERIE 620, 830 OCH 220  
GUIDE BAR DRIVE UNIT FOR SERIE 620 830 AND 220  
Geradföhrung Antriebsstation für Serie 620, 830 und 220



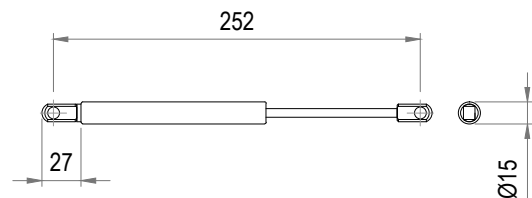
## 900-2220

GLIDSKENA TILL VÄNDENHET KLÄMTRANSPORTÖR  
SLIDE BAR FOR IDLER UNIT GRIP CONVEYOR  
GLEITSCHIENE FÜR UMLENKEINHEIT KLEMMTRANSPORT



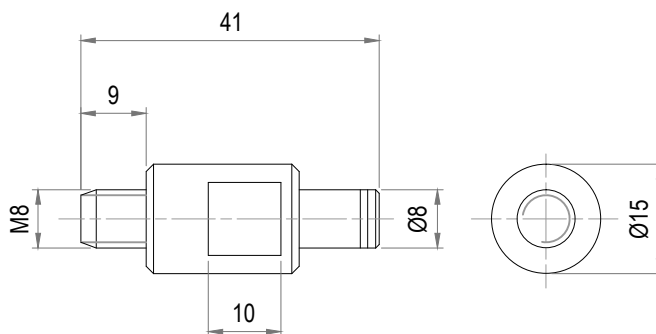
## 900-2230

GASDÄMPARE 120 N  
GAS SHOCK 120 N  
GASDÄMPFER 120 N



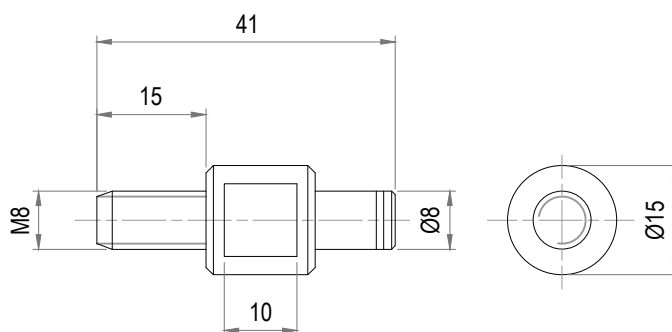
## 900-2240

FÄSTEN FÖR GASDÄMPARE, LÅNG  
SUPPORT BOLT FOR GAS SHOCK, LONG  
BEFESTIGUNG FÜR GASDÄMPFER, LANG



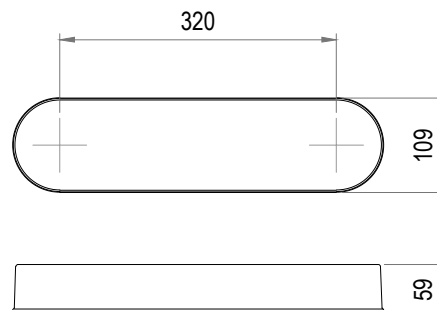
## 900-2250

FÄSTEN FÖR GASDÄMPARE, KORT  
SUPPORT BOLT FOR GAS SHOCK, SHORT  
BEFESTIGUNG FÜR GASDÄMPFER, KURZ



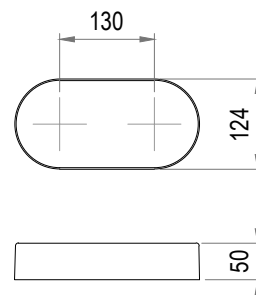
## 900-2260

KEDJESKYDD  
CHAIN GUARD  
KETTEN SCHUTZ



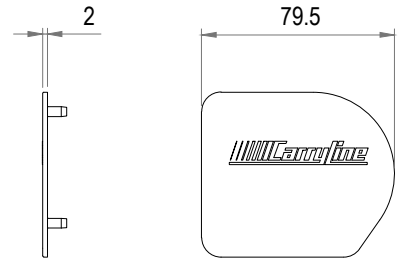
## 900-2270

KEDJESKYDD  
CHAIN GUARD  
KETTEN SCHUTZ



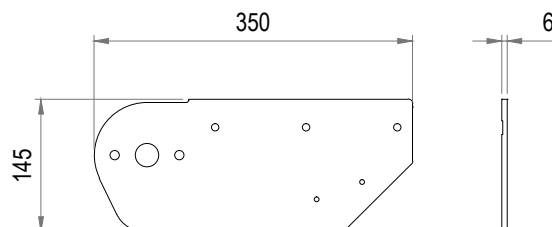
900-2280H/V

SKYDDSLÖCK DRIVSTATION OCH VÄNDENHET SERIE 380  
PROTECTION COVER FOR DRIVE UNIT AND IDLER UNIT SERIE 380  
SCHUTZDECKEL FÜR ANTRIEBSSTATION UND UMLENKEINHEIT SERIE 380



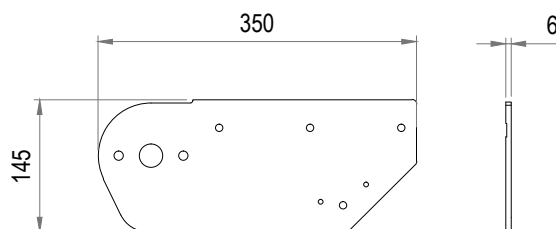
## 900-3000V/H

DRIVPLÅT FÖR SERIE 830 OCH 140  
DRIVEPLATE FOR SERIE 830 AND 140  
ANTRIEBPLATTE FÜR SERIE 830 UND 140



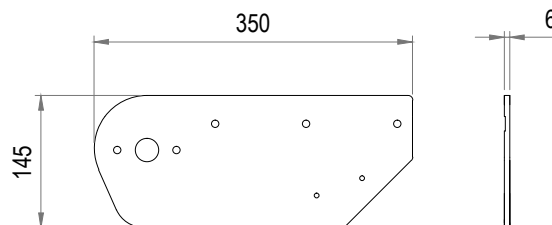
## 900-3005V/H

DRIVPLÅT FÖR SERIE 220  
DRIVEPLATE FOR SERIE 220  
ANTRIEBPLATTE FÜR SERIE 220



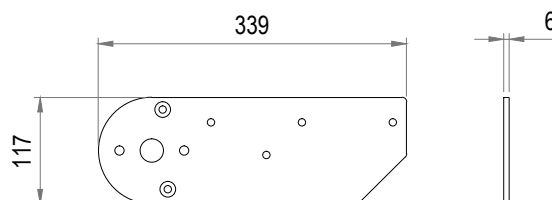
## 900-3010V/H

DRIVPLÅT FÖR SERIE 620  
DRIVEPLATE FOR SERIE 620  
ANTRIEBPLATTE FÜR SERIE 620



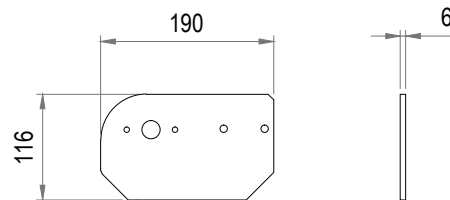
## 900-3020V/H

DRIVPLÅT FÖR KLÄMTRANSPORTÖR  
DRIVEPLATE SIDE GRIP  
ANTRIEBPLATTE KLEMMTRANSPORT



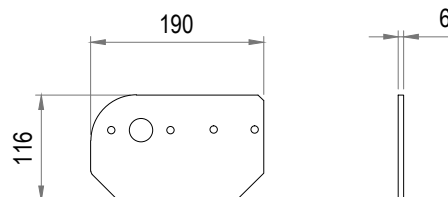
## 900-3030

DRIVPLÅT FÖR SERIE 240  
DRIVE PLATE FOR SERIE 240  
ANTRIEBPLATTE FÜR SERIE 240



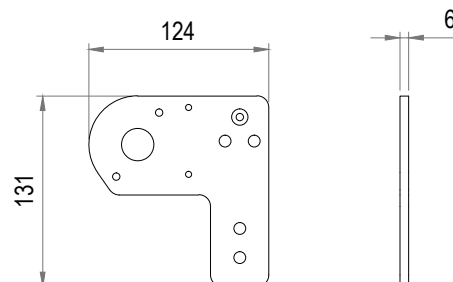
## 900-3040

DRIVPLÅT TILL KEDJA RF2040S  
DRIVE PLATE FOR CHAIN RF2040S  
ANTRIEBPLATTE FÜR KETTE RF2040S



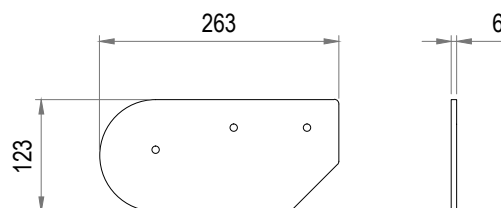
## 900-3045

DRIVPLÅT FÖR SERIE 380  
DRIVE PLATE FOR SERIE 380  
ANTRIEBPLATTE FÜR KETTE RF2040S



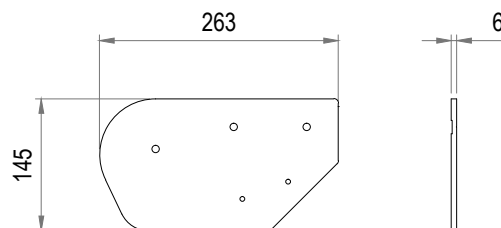
## 900-3048V/H

VÄNDPLÅT FÖR KLÄMTRANSPORTÖR  
IDLER PLATE FOR SIDE GRIP  
UMLLENKPLATTE FÜR KLEMMTRANSPORT



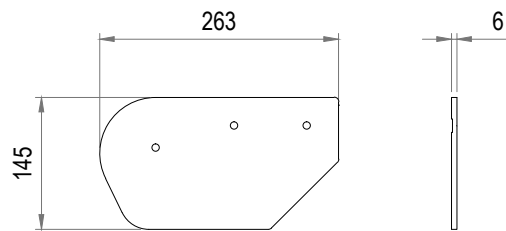
## 900-3049V/H

VÄNDPLÅT MED KEDJESTYRNING FÖR SERIE 830  
IDLER PLATE WITH CHAIN GUIDE FOR SERIE 830  
UMLLENKPLATTE MIT KETTENSFÜHRUNG FÜR SERIE 830



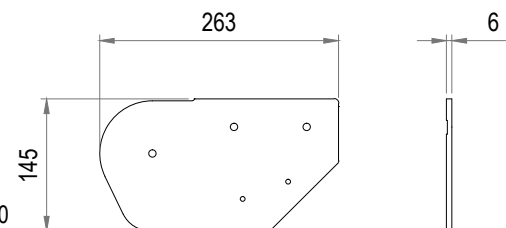
## 900-3050V/H

VÄNDPLÅT FÖR SERIE 830  
IDLER PLATE FOR SERIE 830  
UMLENKPLATTE FÜR SERIE 830



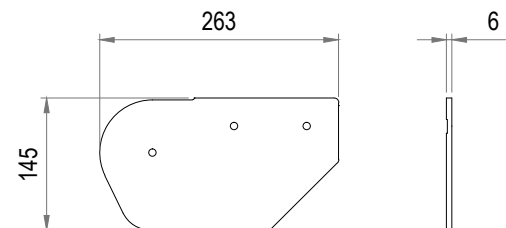
## 900-3054V/H

VÄNDPLÅT MED KEDJESTYRNING FÖR SERIE 140 OCH 220  
IDLER PLATE WITH CHAIN GUIDE FOR SERIE 140 AND 220  
UMLENKPLATTE MIT KETTENSFÜHRUNG FÜR SERIE 140 UND 220



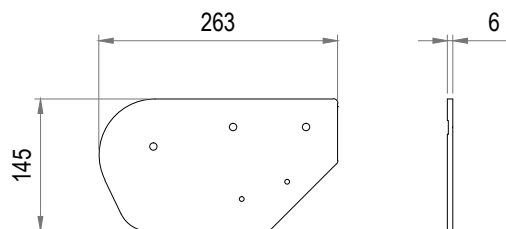
## 900-3055V/H

VÄNDPLÅT FÖR SERIE 140  
IDLER PLATE FOR SERIE 140  
UMLENKPLATTE FÜR SERIE 140



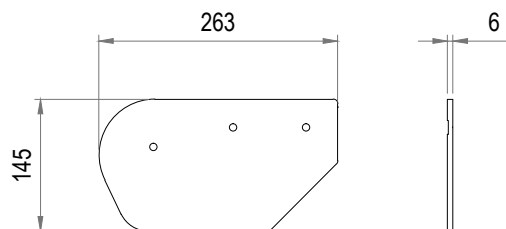
## 900-3059V/H

VÄNDPLÅT MED KEDJESTYRNING FÖR SERIE 620  
IDLER PLATE WITH CHAIN GUIDE FOR SERIE 620  
UMLENKPLATTE MIT KETTENSFÜHRUNG FÜR SERIE 620



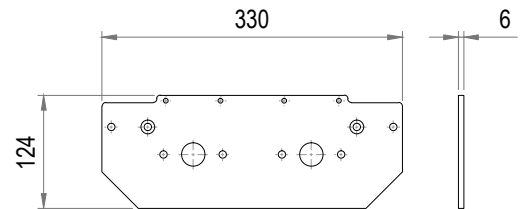
## 900-3060V/H

VÄNDPLÅT FÖR SERIE 620  
IDLER PLATE FOR SERIE 620  
UMLENKPLATTE FÜR SERIE 620



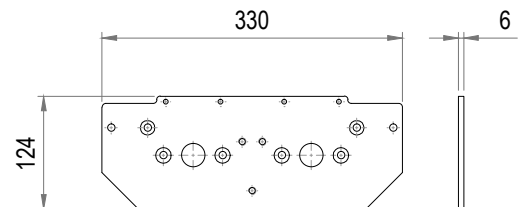
## 900-3061

DRIVPLÅT, MOTORSIDA FÖR 830-345 OCH 140-345  
DRIVEPLATE, SIDE FOR MOTOR FOR 830-345 AND 140-345  
ANTRIEBPLATTE, SEITE FÜR MOTOR FÜR 830-345 UND 140-345



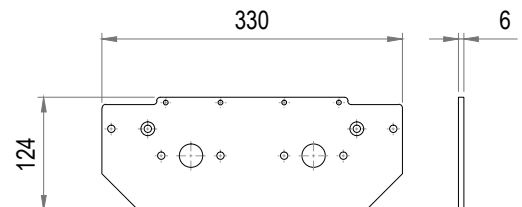
## 900-3062

DRIVPLÅT, TRANSMISSIONSIDA FÖR 830-345 OCH 140-345  
DRIVEPLATE, SIDE FOR TRANSMISSION FOR 830-345 AND 140-345  
ANTRIEBPLATTE, SEITE FÜR GETRIEBE FÜR 830-345 UND 140-345



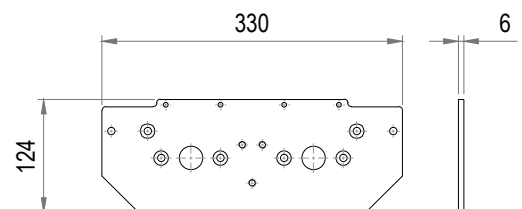
## 900-3063

DRIVPLÅT, MOTORSIDA FÖR 620-345  
DRIVEPLATE, SIDE FOR MOTOR FOR 620-345  
ANTRIEBPLATTE, SEITE FÜR MOTOR FÜR 620-345



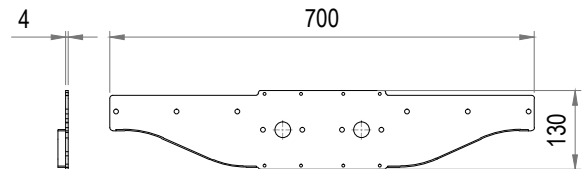
## 900-3064

DRIVPLÅT, TRANSMISSIONSIDA FÖR 620-345  
DRIVEPLATE, SIDE FOR TRANSMISSION FOR 620-345  
ANTRIEBPLATTE, SEITE FÜR GETRIEBE FÜR 620-345



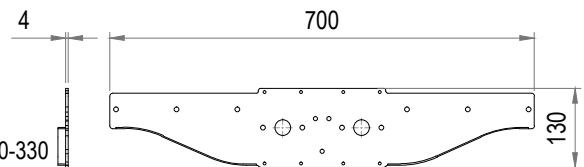
## 900-3065

DRIVPLÅT, MOTORSIDA FÖR 830-330 OCH 140-330  
DRIVEPLATE, SIDE FOR MOTOR FOR 830-330 AND 140-330  
ANTRIEBPLATTE, SEITE FÜR MOTOR FÜR 830-330 UND 140-330



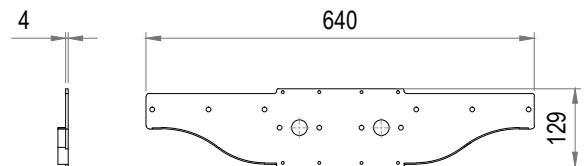
## 900-3066

DRIVPLÅT, TRANSMISSIONSIDA FÖR 830-330 OCH 140-330  
DRIVEPLATE, SIDE FOR TRANSMISSION FOR 830-330 AND 140-330  
ANTRIEBPLATTE, SEITE FÜR GETRIEBE FÜR 830-330 UND 140-330



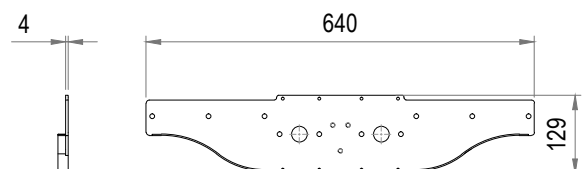
## 900-3067

DRIVPLÅT, MOTORSIDA FÖR 620-330  
DRIVEPLATE, SIDE FOR MOTOR FOR 620-330  
ANTRIEBPLATTE, SEITE FÜR MOTOR FÜR 620-330



## 900-3068

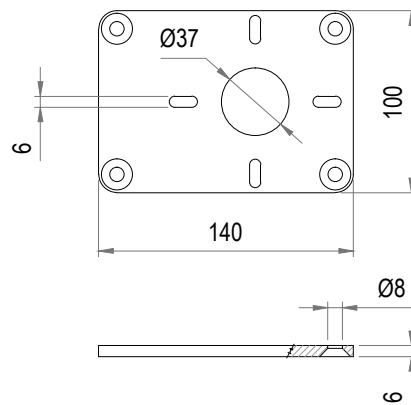
DRIVPLÅT, TRANSMISSIONSIDA FÖR 620-330  
DRIVEPLATE, SIDE FOR TRANSMISSION FOR 620-330  
ANTRIEBPLATTE, SEITE FÜR GETRIEBE FÜR 620-330





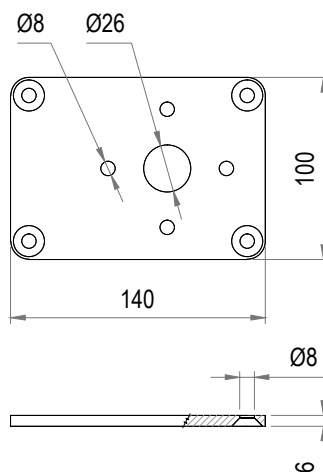
## 900-3070

MOTORPLÅT SEW WA20, WA30, SA37  
MOTOR PLATE SEW WA20, WA30, SA37  
MOTOR BLECH SEW WA20, WA30, SA37



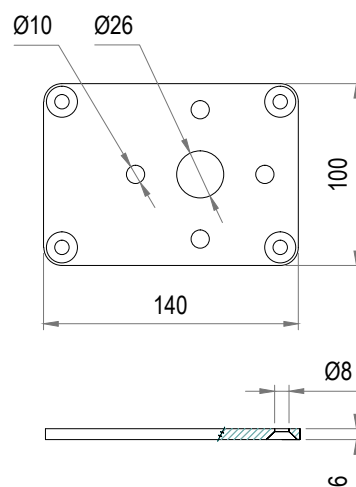
## 900-3100

MOTORPLÅT BENZLER BS40 FÖR SERIE 620  
MOTOR PLATE BENZLER BS40 FOR SERIE 620  
MOTOR BLECH BENZLER BS40 FÜR SERIE 620



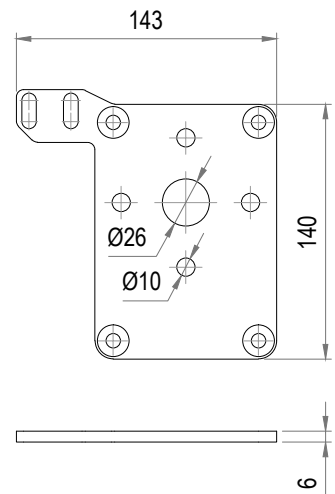
## 900-3110

MOTORPLÅT BENZLER BS40 FÖR SERIE 830, 140 OCH 220  
MOTOR PLATE BENZLER BS40 FOR SERIE 830, 140 AND 220  
MOTOR BLECH BENZLER BS40 FÜR SERIE 830, 140 UND 220



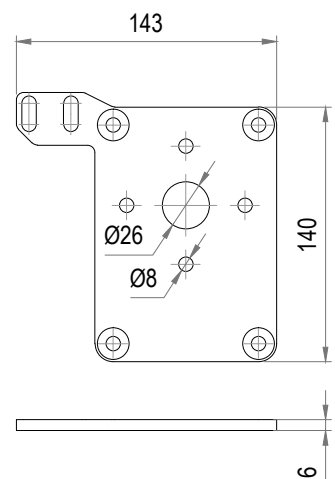
## 900-3115H/V

MOTORPLÅT MED RULLÖVERGÅNGSFÄSTE SERIE 830, 140 OCH 220  
MOTOR PLATE WITH BRACKET FOR ROLLER TRANSFER SERIE 830, 140 AND 220  
MOTOR BLECH MIT BEFESTIGUNG FÜR ROLLENÜBERGANG SERIE 830, 140 UND 220



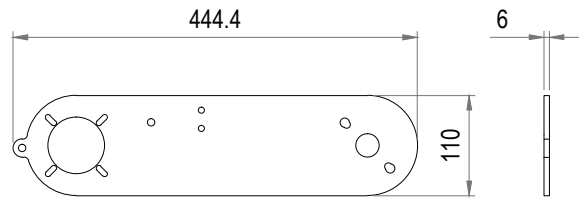
## 900-3116H/V

MOTORPLÅT MED RULLÖVERGÅNGSFÄSTE SERIE 620  
MOTOR PLATE WITH BRACKET FOR ROLLER TRANSFER SERIE 620  
MOTOR BLECH MIT BEFESTIGUNG FÜR ROLLENÜBERGANG SERIE 620



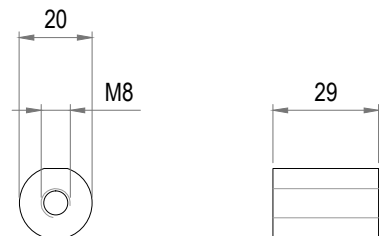
## 900-3120

MOTORPLÅT FÖR UNDERHÄNGANDE DRIFT  
MOTOR PLATE FOR SUSPENDED GEARBOX  
MOTORPLATTE FÜR UNTENLIEGENDEM GETRIEBE



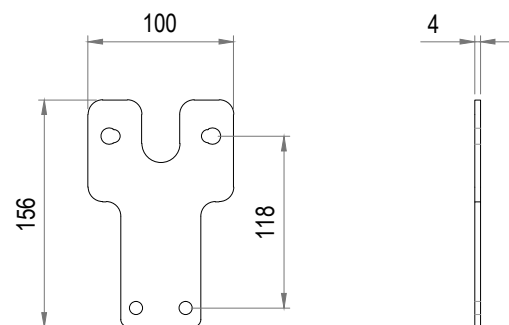
## 900-3150

DISTANS FÖR MOTORPLÅT 29 MM  
SPACER FOR MOTOR PLATE 29 MM  
Distanz für Motorplatte 29 MM



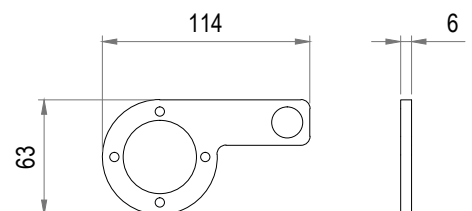
## 900-3200

TRANSPORTÖRSFÄSTE FÖR DRIVENHET  
CONVEYOR BRACKET FOR DRIVE UNIT  
BEFESTIGUNGSWINKEL FÜR ANTRIEBSSTATION



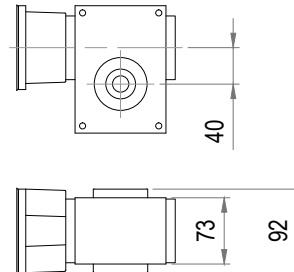
## 900-3220

MOMENTARM SERIE 380 LENZE  
TORQUE ARM SERIE 380 LENZE  
DREHMOMENTSTÜTZE SERIE 380 LENZE



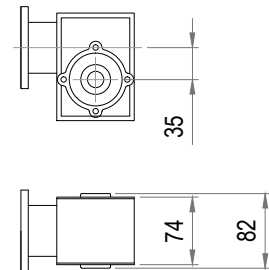
## 900-4000

BENZLER BS40 UTVÄXLING X:1  
BENZLER BS40 RATIO X:1  
BENZLER BS40 ÜBERSETZUNG X:1



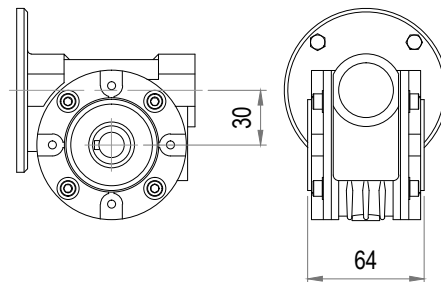
## 900-4005

BENZLER BS35 UTVÄXLING X:1  
BENZLER BS35 RATIO X:1  
BENZLER BS35 ÜBERSETZUNG X:1



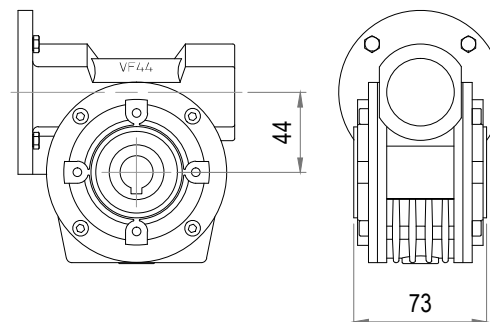
## 900-4010

BONFIGLIOLI VF-30P UTVÄXLING X:1  
BONFIGLIOLI VF-30P RATIO X:1  
BONFIGLIOLI VF-30P ÜBERSETZUNG X:1



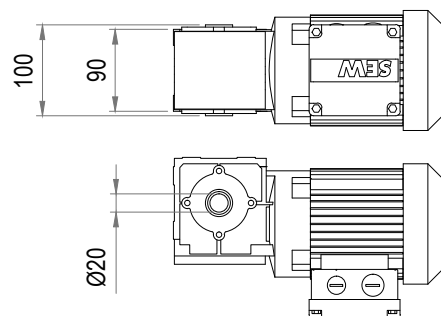
## 900-4020

BONFIGLIOLI VF-44P UTVÄXLING X:1  
BONFIGLIOLI VF-44P RATIO X:1  
BONFIGLIOLI VF-44P ÜBERSETZUNG X:1



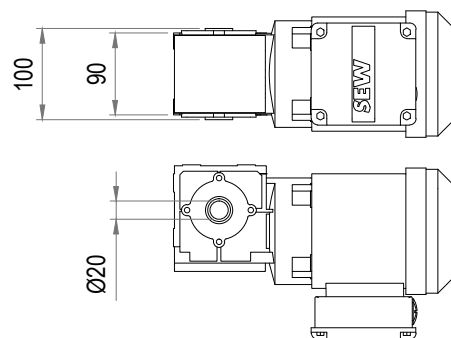
## 900-4025

SEW WA20 MED MOTOR 0.25 kW i=X  
SEW WA20 WITH ENGINE 0.25 kW i=X  
SEW WA20 MIT MOTOR 0.25 kW i=X



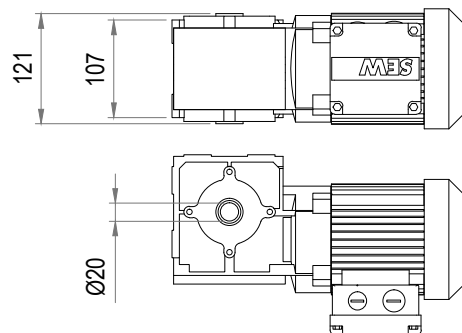
## 900-4030

SEW WA20 MED MOTOR 0.37 kW i=X  
SEW WA20 WITH ENGINE 0.37 kW i=X  
SEW WA20 MIT MOTOR 0.37 kW i=X



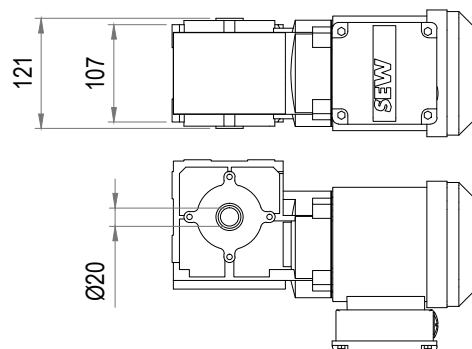
## 900-4035

SEW WA30 MED MOTOR 0.25 kW i=X  
SEW WA30 WITH ENGINE 0.25 kW i=X  
SEW WA30 MIT MOTOR 0.25 kW i=X



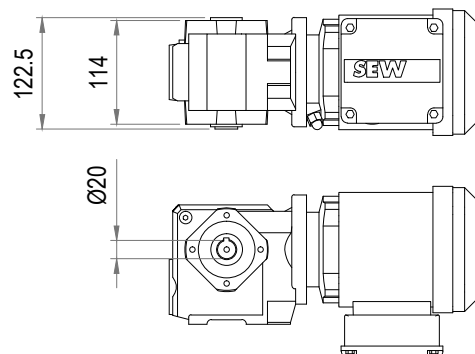
## 900-4040

SEW WA30 MED MOTOR 0.37 kW i=X  
SEW WA30 WITH ENGINE 0.37 kW i=X  
SEW WA30 MIT MOTOR 0.37 kW i=X



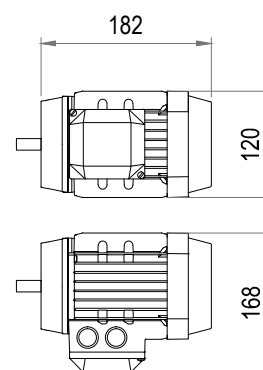
## 900-4050

SEW SA37 MED MOTOR 0.37 kW i=X  
SEW SA37 WITH ENGINE 0.37 kW i=X  
SEW SA37 MIT MOTOR 0.37 kW i=X



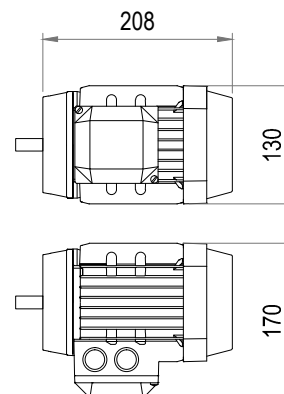
## 900-4070

MOTOR ABB 63B4 (0.18KW)



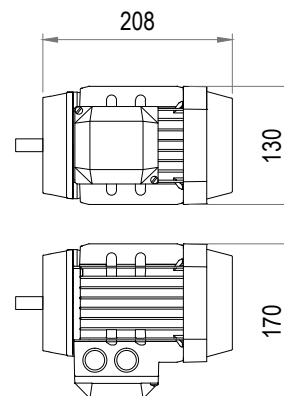
## 900-4080

MOTOR ABB 71B4 (0.37KW)



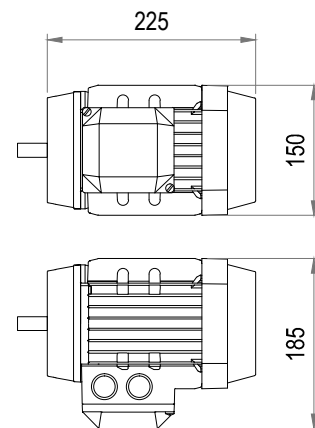
## 900-4090

MOTOR ABB 71C4 (0.55KW)



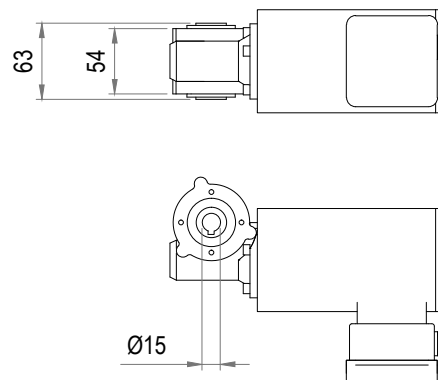
## 900-4100

MOTOR ABB 80B4 (0.75KW)



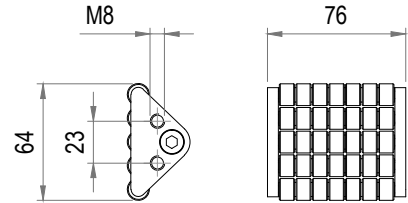
## 900-4200

LENZE SSN31 MED MOTOR 0.06 kW i=X  
LENZE SSN31 WITH ENGINE 0.06 kW i=X  
LENZE SSN31 MIT MOTOR 0.06 kW i=X



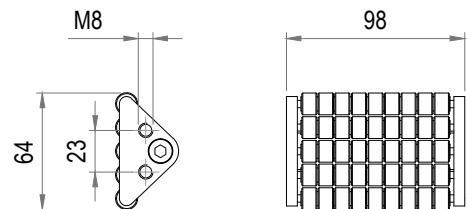
## 900-7000

RULLÖVERGÅNG SERIE 620  
ROLLER TRANSFER SERIE 620  
ROLLENÜBERGANG SERIE 620



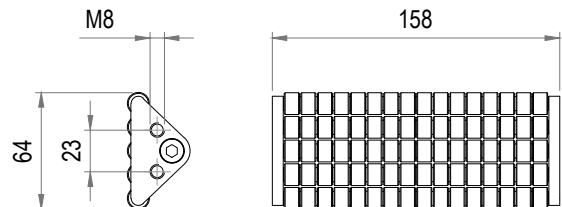
## 900-7010

RULLÖVERGÅNG SERIE 830  
ROLLER TRANSFER SERIE 830  
ROLLENÜBERGANG SERIE 830



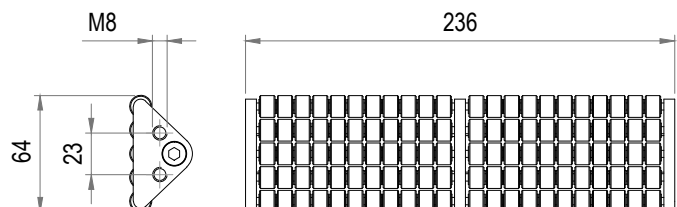
## 900-7020

RULLÖVERGÅNG SERIE 140  
ROLLER TRANSFER SERIE 140  
ROLLENÜBERGANG SERIE 140



## 900-7030

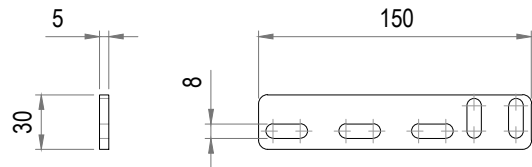
RULLÖVERGÅNG SERIE 220  
ROLLER TRANSFER SERIE 220  
ROLLENÜBERGANG SERIE 220





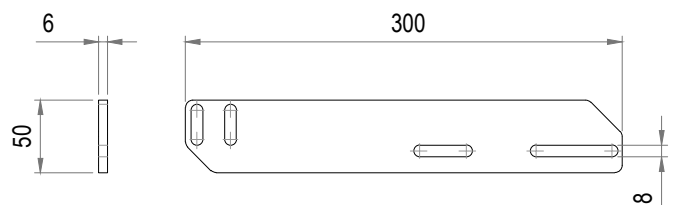
## 900-7100

FÄSTE FÖR RULLÖVERGÅNG 150 MM  
BRACKET FOR ROLLER TRANSFER 150 MM  
BEFESTIGUNG FÜR ROLLENÜBERGANG 150 MM



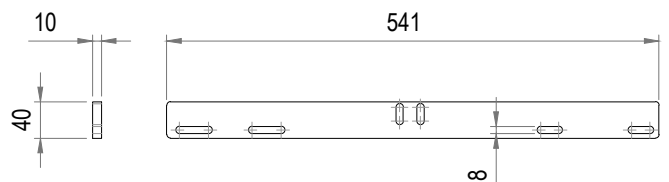
## 900-7110

FÄSTE FÖR RULLÖVERGÅNG 300 MM  
BRACKET FOR ROLLER TRANSFER 300 MM  
BEFESTIGUNG FÜR ROLLENÜBERGANG 300 MM



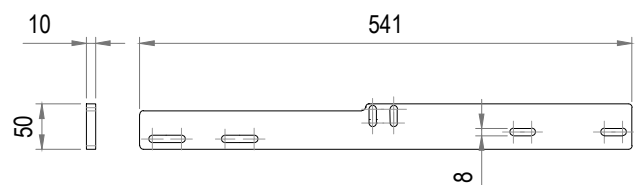
## 900-7120

SKARVJÄRN MELLAN TRANSPORTBANOR  
CONNECTION STRIP BETWEEN CONVEYOR  
STRECKENVERBINDER ZWISCHEN FÖRDERBAHN



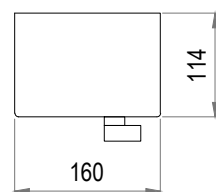
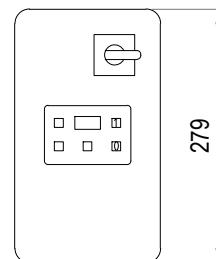
## 900-7130

SKARVJÄRN MED HÖJDSKILLNAD  
CONNECTION STRIP WITH DIFFERENCE IN HEIGHT  
STRECKENVERBINDER MIT HÖHENUNTERSCHIED



## 900-9000

FREKVENSONVANDLARE 380V  
FREQUENCY INVERTER 380V  
FREQUENZVERWERFUNGGER 380V



## 900-9010

FREKVENSONVANDLARE 220V  
FREQUENCY INVERTER 220V  
FREQUENZVERWERFUNGGER 220V

